

**LA FIERA DEDICATA A INNOVAZIONE,
TECNOLOGIE, AFFIDABILITÀ E COMPETENZE 4.0**

TORINO 08 APRILE 2022

**IMBALLAGGI ALIMENTARI: IL DIFFICILE
COMPROMESSO TRA LE ESIGENZE DEL CLIENTE
E LE CARATTERISTICHE FONDAMENTALI
PER IL PRODOTTO E LA PRODUZIONE**

Zardetto Stefano

Tecnologo Alimentare

RESPONSABILE AQ & RD GRUPPO VOLTAN





SOSTENIBILITA'

SHELF LIFE

STOCCAGGIO
TRASPORTO

PACKAGING

PRESENTAZIONE

INFORMAZIONI







100% RECYCLABLE

Remove it where we can.

Reduce it where we can't.

Reuse more.

Recycle what's left.



UK Packaging Preferred Materials & Formats Guidelines 2021 – Own Label and Branded.

Version: PM03
Date: 100321

Red <small>Not to be used as customers cannot easily recycle (UK)</small>		Amber <small>When functional requirements mean green materials are not an option</small>		Green <small>Preferred for UK recycling via kerbside or store</small>			
<p>Materials</p> <p>Compostable/PLA & Biodegradable Plastics</p> <p>Oxy/Oxo degradable Plastics</p> <p>Polystyrene</p> <p>PVC</p> <p><u>PVdC</u></p> <p>MDF</p> <p>Water Soluble Plastics</p> <p><u>Waxed paper</u></p>	<p>Formats & Designs</p> <p>Rigid Black Plastic</p> <p>Expanded/Foamed/Density Modified Plastics</p> <p>Paper/board laminated on both sides</p> <p><u>Complex laminates using aluminium layers for decoration</u></p> <p><u>Hi/Mid-Cones</u></p> <p><u>Plastic straws & cutlery</u></p> <p>Glitter</p>	<p>Amber</p>		<p>Materials</p> <p><u>NIR Black HDPE (non food grade)*</u></p> <p>Non PE flexible films (incl. Complex laminates)**</p> <p>Foiled paper</p> <p><u>Wood & Cork</u></p> <p>New material innovations</p>	<p>Formats & Designs</p> <p>Beverage/Liquid Food Cartons</p> <p><u>Composite Drums</u></p> <p>Shrink sleeves (perforated, include messaging to remove, <u>max ink coverage of 60%</u>)</p> <p><u>Spouted pouches of mixed material</u></p>	<p>Materials</p> <p>Glass</p> <p>PET (Rigid)</p> <p>PE (Rigid & Flexible)</p> <p>PP (Rigid)</p> <p>Steel & Aluminium</p> <p>Cardboard</p> <p>Paper</p> <p>Glassine (<u>non-siliconised</u>)</p>	<p>Formats & Designs</p> <p>Paper/board with plastic; single side lamination <15% by weight (incl. windows)***</p> <p>Mono PET lidding film on PET tray perm-welded</p> <p><u>Mono material pouch</u></p>

AREE INTERVENTO
ESIGENZE CLIENTE

ESIGENZE/CONSEGUENZE
PER LA PRODUZIONE



Riduzione dello spessore

Variazioni TR

Rimozione di alcuni materiali barriera

Macchinabilità

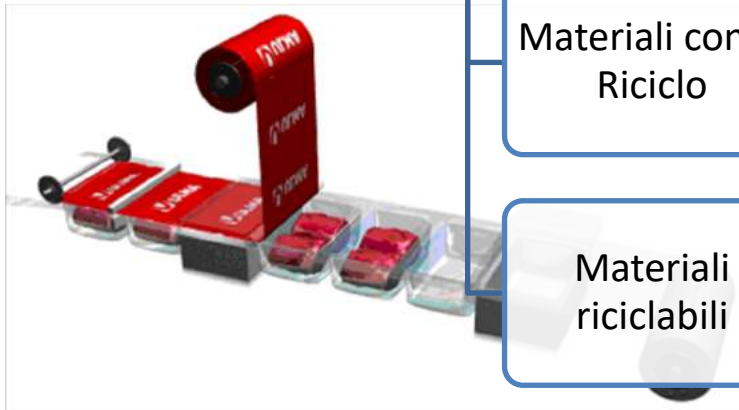
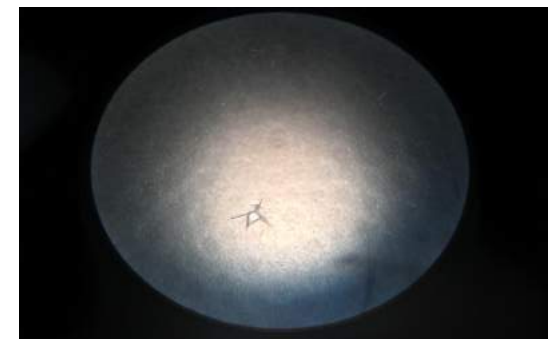
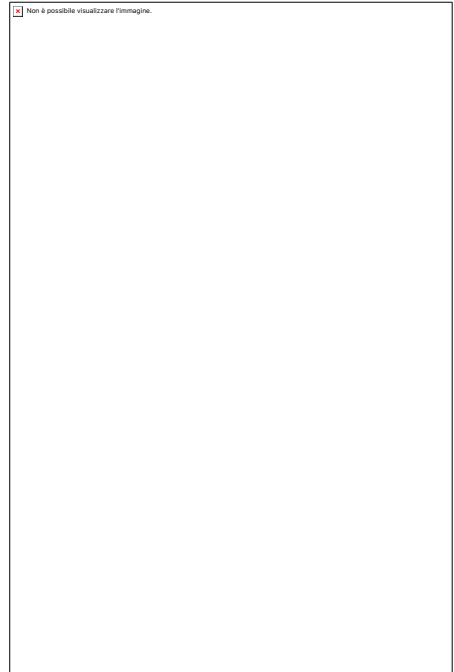
Progettazione nuovi imballi

Difettosità

Materiali con % Riciclo

Configurazione Pallet/Trasporti

Materiali riciclabili



forme migliori.

Grazie per l'attenzione

Il made in Italy



Made in Italy - true authentic Italian pasta.